

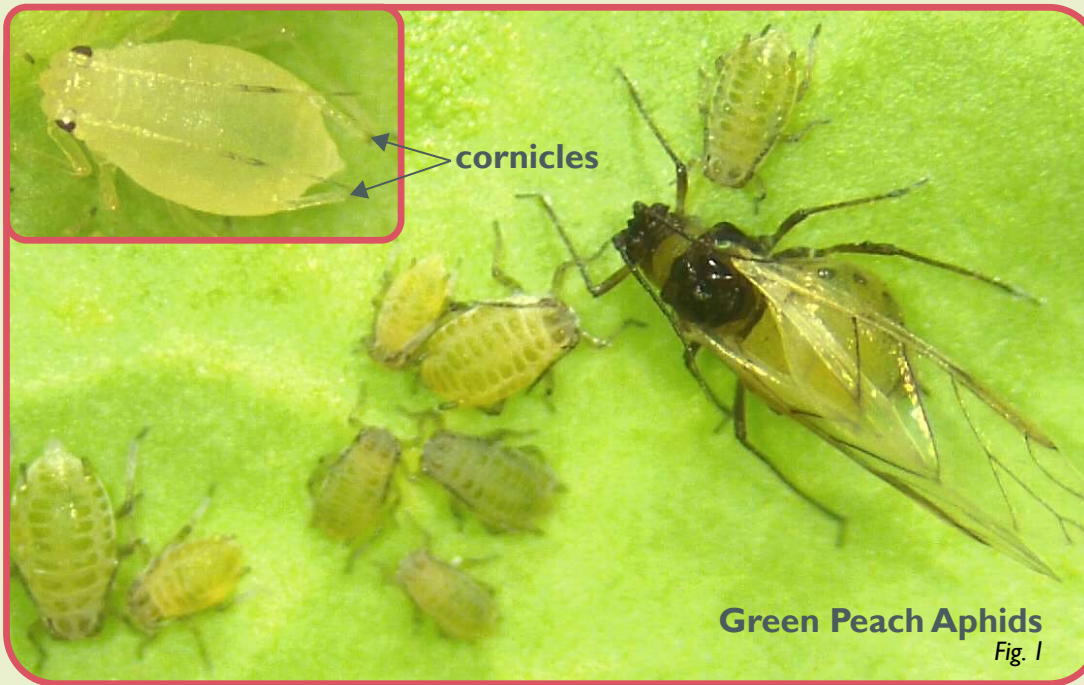
APHIDS

Aphids use their straw-like mouthparts to suck sap from plants. They are often found on stems and the underside of leaves.

IDENTIFICATION

Size: 1/8 to 1/4 inch long | **Shape:** Pear | **Color:** Green, black, red, brown, yellow, or gray

One sure way to identify an aphid is to get out a magnifying lens and check for cornicles at the end of the abdomen. This is a body part that all aphids have, and they look like two little tailpipes.



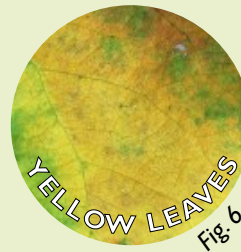
SIGNS OF APHID INFESTATION



Honeydew is a sticky substance secreted by some insects, including aphids, after they eat. It can attract other insects, and enable the growth of sooty mold.



Sooty mold grows on honeydew. It is harmless to the plant.



MANAGEMENT

- Wash aphids off plants with water, or wipe off with a moistened cotton pad or swab.
- Introduce natural predators like lady beetles and lacewings.
- Place colored sticky traps to attract and capture aphids.
- Spray affected leaves with a garlic extract product or pest repellent deemed safe for aquaponics.

Figure 1. Farrell, M. (Photographer). (July 7, 2021). *Aphid, Green Peach with many nymphs* [Photograph]. Reproduced with permission from the University of Minnesota.
 Figure 2. Farrell, M. (Photographer). (August 2, 2021). *Aphid, Winter melon* [Photograph]. Reproduced with permission from the University of Minnesota.
 Figure 3. Farrell, M. (Photographer). (August 2, 2021). *Aphid, cabbage leaf* [Photograph]. Reproduced with permission from the University of Minnesota.
 Figure 4. Farrell, M. (Photographer). (August 2, 2021). *Honeydew* [Photograph]. Reproduced with permission from the University of Minnesota.
 Figure 5. Farrell, M. (Photographer). (August 2, 2021). *Scales damage, sooty mold, honeydew, wasps* [Photograph]. Reproduced with permission from the University of Minnesota.
 Figure 6. Greyling, L. (Photographer). (n.d.). *Leaf Yellowed Gnawed Free Photo* [Online image]. Retrieved August 16, 2021 from <https://www.needpix.com/photo/1441268/leaf-yellowed-gnawed-eaten-half-eaten-leaf-2-free-pictures-free-photos-free-images-royalty-free>. Reprinted with permission as per <https://creativecommons.org/publicdomain/zero/1.0/>.
 Figure 7. Dead shoot and leaf [Online image]. (n.d.). Retrieved August 16, 2021 from <https://www.maxpixel.net/Decay-Change-Recycle-Dying-Dead-Leaf-Green-Autumn-4738318>. Reprinted with permission as per <https://creativecommons.org/publicdomain/zero/1.0/>.
 Figure 8. Nelson, S. (Photographer). (June 28, 2016). *Tahitian gardenia: Aphids feeding injury* [Online image]. Retrieved August 15, 2021 from <https://www.flickr.com/photos/scotnelson/27887957101>. Reprinted with permission as per <https://creativecommons.org/publicdomain/zero/1.0/>.